

## **Historic, Archive Document**

Do not assume content reflects current scientific knowledge, policies, or practices.



62,89

uc



LIBRARY  
RECEIVED  
★ MAR 4 - 1953 ★  
U.S. Department of Agriculture



# Wholesale Price List

FALL 52 — SPRING 53

## The Tankard Nurseries

Exmore, Virginia

SPECIALIZING IN

Azaleas

Broad Leaved Evergreens

General Ornamentals



# Members

VIRGINIA NURSERYMEN'S ASSOCIATION  
SOUTHERN NURSERYMEN'S ASSOCIATION  
AMERICAN ASSOCIATION OF NURSERYMEN

## THE TANKARD NURSERIES Exmore, Virginia

L. D. TELEPHONE: Office-Belle Haven 2-6211

J. E. TANKARD: Belle Haven 2-2889

S. D. TANKARD, Jr.: Belle Haven 2-3244

Located on the Famous

## EASTERN SHORE of VIRGINIA

Where "Heaven and Earth Meet" in the words of Capt. John Smith who described this land as the best suited for man's habitation of any of the many places he had been.

### THE OLD HAND AT THE NEW STAND

"There is no substitute for experience." Sam Tankard, Jr. of the Tankard Brothers has been in the Nursery business for 25 years. He and brother John give close supervision to growing good stock and careful attention to filling your' orders.

In 1946, they established the present nursery at Exmore, Virginia and now have a large stock of the finest of ornamentals with which to serve old and new customers. . . .

Tankard's is not the largest nursery in the country, but it is one of the best.

The Eastern Shore and the Del-Mar-Va Peninsula have become a great nursery center. Come and find all your wants.

## WHOLESALE PRICE LIST FALL 52 — SPRING 53

Within easy trucking distance of Easterns points, but we can ship anywhere by express, freight, or truckload.

We have customers in 17 states - from Mass. to Oklahoma, and have received many compliments on our plants and our packing.

**Terms and Conditions:-** Prices are F. O. B. Exmore, Virginia, packing in boxes and bales additional, subject to prior sale, and our confirmation of the order. Terms are cash with order or 1-4 cash with order, balance C. O. D., unless credit has been established with us.

50 plants at 100 rate; 500 at 1000 rate.

WE CAN DIG AND SHIP ALMOST ANY WEEK DURING THE WINTER, SPRING OR FALL. However, we advise you to let us have your order at once so we may reserve stock for you. Many items listed are scarce this season.

We box Azaleas and pack deciduous stock for L. C. L. shipment by Rail and to some destinations by truck lines, but cannot undertake to box and ship larger evergreens. These are offered only for bulk shipment by truck or car load.

# AZALEAS

For forcing and landscape planting,

We grow many thousands of beautiful plants, dense, and bushy. These are the finest Azalea plants we have ever raised. Grown in natural Azalea soil in the field, under full sun. Place your order now as there were not enough plants to meet the demand again last season, and sales have already taken the majority of this year's crop.

Within easy trucking distance of Eastern points, but we can ship anywhere by express, freight or truckload.

For Azalea orders, 1000 rates apply on all orders for 500 or more plants for bulk (truck) shipment. 100 rates apply on all Azalea orders to be packed for shipment in boxes.

Only a few thousand left, mostly Hinodegiri and Coral Bells Order at once and early for next season.

## KURUME VARIETIES

PRICES Kurume varieties, (\*\* except Hinocrimson which is 25c per plant additional).

Add 10c per plant if burlap wrapping is desired.

	Each per 100	Each per 1000
6 - 8 in. spread .....	\$ .80	\$ .70
8 - 10 in. spread .....	1.10	.90
10-12 in. spread .....	1.35	1.15
12-15 in. spread .....	1.75	1.50
15-18 in. spread .....	2.50	2.00

VARIETIES: Note sizes available & those sold out below.

**AMOENA** - Hose-in-hose,rosy purple flowers. Very hardy. Sold out

**CHRISTMAS CHEER** - Hose-in-hose Christmas red flowers. Sold out

**CORAL BELLS** - Hose-in-hose deep pink. The favorite pink Azalea 6-8 in. to 10-12 in.



This is how our Azaleas look.  
Visit us and see our fine stock.

## AZALEAS — continued

**FLAME** - Hose-in-hose bright madder red. Tall grower Sold out

**HEXE** - Hose-in-hose, large crimson-red. Late flowering-often at Mother's Day. 6-8 in. to 12-15 in. (Fall shipment only) Very few left.

**\*\*HINO - CRIMSON** - Far superior to Hinodegiri because of its deep crimson color which does not fade. Hardiness equal to or surpassing Hinodegiri. Sold out

**HINODEGIRI** - Brilliant red. The standard hardy Azalea. 6-8 in., 8-10 in. and 15-18 in.

**PINK PEARL** - Hose-in-hose light pink. Vigorous-excellent foliage. Sold out.

**SALMON BEAUTY** - Hose-in-hose, large salmon pink 10-12 in. Very few left.

**SNOW** - Hose-in-hose snow white flowers. Good grower -glossy foliage. 8-10 in. to 10-12 in.

**SWEETHEART SUPREME** - Beautiful pink, hose-in-hose flowers. Sold out.

## INDICA AZALEAS

**FORMOSA** - Large purple flowers. Rapid grower, where hardy.

SIZES AND PRICES FORMOSA AZALEAS, balled, without burlapping.

12-15 inch spread - each	.....	\$1.00
15-18 inch spread - each	.....	1.25
18-24 inch spread - each	.....	1.50

**LEDIFOLIA (INDICA) ALBA** - Sold out.

## KAEMPFERI HYBRID AZALEAS

These are large vigorous-growing azaleas recently developed to give the hardiness of Kaempferi in combination with the gorgeous large flowers of the other parent, Malvatica  
All Varieties Sold out.

## GLENN DALE HYBRID AZALEAS

Recently introduced by the U. S. D. A., these crosses produce flowers of large size and outstanding colors on vigorous plants of unusually good foliage and hardiness. Only a few left unsold.

**APHRODITE** - Rose pink flowers. Midseason. 10-12 in. to 12-15 in.

**BUCCANEER** - Brilliant orange-red. Sold out.

**GAIETY** - Bright clear pink. with deep rose-red blotch. 8-10 in. to 12-15 in.

**GREETING** - Coral-rose, midseason. Edges of petals filled 10-12 in. to 12-15 in.

## DEERFIELD HARDY HYBRID AZALEAS

Sold out for this season.

## PERICAT HARDIER HYBRID AZALEAS

**MRS. L. C. FISHER** - Extra hardy, said to stand Rhode Island climate. Lovely pink flowers, deep green fine textured foliage.

### PRICES: Glenn Dale and Pericat Varieties

8-10 inch spread, each per 10	.....	\$1.35
10-12 inch spread, each per 10	.....	1.60
12-15 inch spread, each per 10	.....	2.00
15-18 inch spread, each per 10	.....	3.00

## Broad Leaved Evergreens

All first-class, dense, pruned plants with good color and good roots, properly dug and burlapped.

All Evergreens B. & B.

EACH PER 10

**ABELIA** grandiflora.

2-2½ ft. ....	1.50
3-4 ft. ....	2.50

**AUCUBA** aurea maculata. Gold Dust Aucuba.

2-3 ft. slender ....	2.50
3-4 ft. slender ....	3.50

**BERBERIS** julianae.

1½-2 ft. ....	2.50
2-2½ ft. few ....	3.25

**BUKUS** sempervirens. (Columnar Form)

18-21 in. ....	2.50
21-24 in. ....	3.25
24-27 in. ....	3.75

**CAMELLIA** sasanqua, MAIDEN'S BLUSH.

Delicate single pink flowers, large in size, fragrant in Oct and Nov. This is the hardy Camellia of easy culture, much in demand.

2½-3 ft. ....	4.00
3-3½ ft. ....	5.00

**ELAEAGNUS** fruitlandi.

2-3 ft. ....	2.50
--------------	------

**EUONYMUS** kiautschovicus. (E. patens.)

"Carrieri" type with more nearly evergreen leaves.

1½-2 ft. breadth ....	1.25
2-2½ ft. breadth ....	1.75
2½-3 ft. breadth ....	2.25
3-4 ft. breadth ....	3.00

**GARDENIA** florida. The hardy type that grows outside here and is a prolific bloomer.

1½-2 ft. ....	2.00
2-2½ ft. ....	2.50



Ilex crenata rotundifolia Photographed Sept. 6, 1952

**BROADLEAF EVERGREENS — continued**

EACH PER 10

**ILEX crenata convexa (bullata).** Convex leaf Japanese Holly  
This is the spreading variety with small leaves and slow  
growth that is in such great demand.

12-15 in. spread ..... 1.65

**ILEX crenata microphylla** Few.

18-24 in. .... 2.50

**ILEX crenata rotundifolia.**

	sheared	natural growth
12-15 in. ....	1.50	1.25
15-18 in. ....	2.00	1.75
18-24 in. ....	2.50	2.25
2-2½ ft. ....	3.25	2.75

**ILEX cornuta burfordi.** Burford Holly. Beautiful plants.

No berries; good standard grade, female.

2-2½ ft. .... 4.00

**HEAVY SPECIMENS**

	No Berries	Berried Plant
2-2½ ft. ....	5.00	6.00
2½-3 ft. ....	6.00	7.00

**JASMINUM floridum.** Summer flowering.

2-3 ft. spread ..... 1.50

3-4 ft. spread ..... 2.00

**LAUROCERASUS schipkaensis reynvani.**

Dwarf Laurel. Rather hardy.

2½-3 ft. few ..... 5.00

**LIGUSTRUM japonicum.** Tall grower

3-4 ft. .... \$1.50

4-5 ft. .... 2.00

5-6 ft. .... 2.50

6-7 ft. .... 3.50

7-8 ft. .... 5.00

**LIGUSTRUM lucidum.** Only a few plants left. Ask for quotations.

**LIGUSTRUM luc. recurvifolium.** Darker green leaves with curved margins.

Only a few left. Ask for quotations.

**NANDINA domestica.**

	2 to 3 canes	Heavy
18-24 in. ....	1.50	2.00
2-2½ ft. ....	1.75	2.50
2½-3 ft. ....	2.00	3.50

**OSMANTHUS aquifolium. (Illicifolium)** Only a few left. Ask for quotations.

**OSMANTHUS fortunei.** Very handsome broad leaves.

2-2½ ft. .... 3.00

2½-3 ft. .... 3.50

3-3½ ..... 4.00

**PHOTINIA serrulata.** Evergreen Photinia

2-3 ft. .... 3.00

3-4 ft. .... 4.00

**PIERIS japonica.**

12-15 in. .... 2.00

**PYRACANTHA graberi.** Large red berries, upright growth

2-3 ft gallon cans, staked ..... 3.00

**PYRACANTHA LALANDI.**

2-3 ft. gallon cans staked ..... 2.25

4-5 ft. berried ..... 3.50

5-6 ft. berried ..... 4.50



<b>PYRACANTHA</b> yunnanensis. Root pruned. Red berries.		
3½-4 ft. heavily berried .....		5.00
4-5 ft. heavily berried .....		7.50
5-6 ft. heavy berried .....		10.00
<b>VIBURNUM</b> tinus. (Laurestinus)		
1½-2 ft. ....		2.00
2-2½ ft. ....		3.00

## Coniferous Evergreens

All Conifers pruned and/or sheared, with excellent form and color, priced B&B.

**CEDRUS** deodara. Only a few trees left. Ask for quotations.

**CHAMAECYPARIS** - filifera. Thread-branched Cypress. Heavy sheared plants.

2-2½ ft. ....	2.50
2½-3 ft. ....	3.50
3-3½ ft. x 3-3½ ft. ....	4.50
3½-4 ft. x 3½-4 ft. few .....	6.00

**CHAMAECYPARIS** obtusa nana. Dwarf Hinoki Cypress. Beauties, cone form.

21-24 in. ....	5.00
----------------	------

**CHAMAECYPARIS** plumosa. Plume Cypress.

3-3½ ft. x 3-3½ ft. ....	4.50
--------------------------	------

**CHAMAECYPARIS** plumosa aurea. Gold Plume Cypress.

1½-2 ft. ....	2.00
2-2½ ft. ....	2.50
2½-3 ft. ....	3.00
5-6 ft. - few .....	5.50

**CHAMAECYPARIS** squarrosa veitchi nana. Dwarf cushion Silver Cypress.

18-24 in. x 18-24 in. ....	3.00
2-2½ ft. x 2-2½ ft. ....	3.50

**JUNIPERUS** Hetzi. (Blue Pfitzer). A very beautiful new spreading juniper, similar to Pfitzer, but superior to it in its interesting bluish color, more shapely natural growth, and more rapid development.

15-18 in. ....	2.00
1½-2 ft. ....	2.50

**JUNIPERUS** hibernica. Irish Juniper.

2½-3 ft. ....	2.00
---------------	------

**JUNIPERUS** chinensis pfitzeriana. Pfitzer's Juniper

1½-2 ft. ....	2.50
2-2½ ft. ....	3.00

**JUNIPERUS** chinensis pfitzeriana compacta Compact Pfitzer with soft, fine-textured foliage, low spreading.

15-18 in. ....	2.00
18-24 in. ....	2.50
2-2½ ft. ....	3.25

**JUNIPERUS** virginiana. Native Red Cedar.

4-4½ ft. ....	3.00
4½-5 ft. ....	3.50

**JUNIPERUS** virginiana Burki. Silver Juniper. Limited quantity.

3-3½ ft. ....	3.50
---------------	------

**CONIFEROUS EVERGREENS — continued****JUNIPERUS** *virg. Canaerti.*

3-3½ ft. ....	3.50
3½-4 ft. ....	4.00
4-4½ ft. - few .....	5.00
4½-5 ft. - few .....	6.00

**PICEA** *pungens.* Colorado Spruce from seed. Limited quantity.**GREEN**, many with blue tinge.

2-2½ ft. ....	3.00
2½-3 ft. ....	4.00

**TAXUS** *baccata hibernica.* (Irish Yew)

2-2½ ft. ....	5.00
---------------	------

**TAXUS** *cuspidata.* Japanese Yew.

18-24 in. spread .....	3.50
2-2½ ft. spread .....	4.25
2½-3 ft. spread or 2-2½ ft. bush type ....	5.50
2½-3 ft. x 2½-3 ft. few .....	7.00

**TAXUS** *cuspidata nana.* (*brevifolia*)

2½-3 ft. x 2½-3 ft. few .....	8.00
-------------------------------	------

**TAXUS** *Hicksii.* Hick's Yew.

2½-3 ft. few .....	5.50
3-3½ ft. - few .....	7.00

**TAXUS** *vermeulenii.* (Upright-columnar). Few.

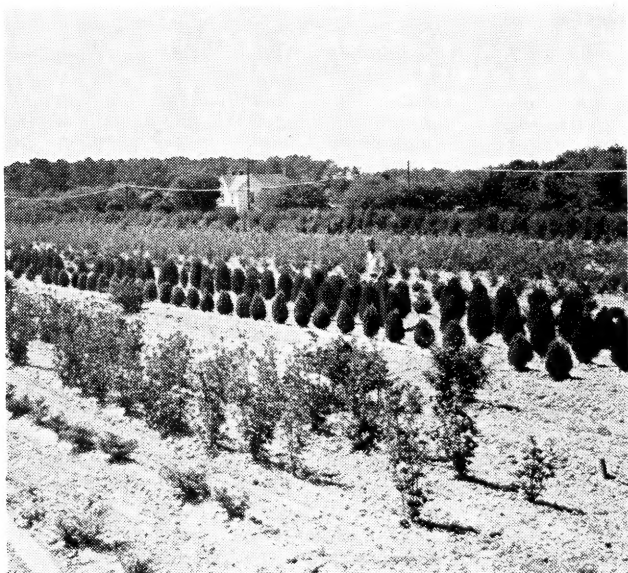
2-2½ ft. ....	4.50
2½-3 ft. ....	5.50

**THUJA** *occidentalis nigra.* Dark green American Arborvitae.

2½-3 ft. ....	3.00
3-3½ ft. ....	3.50

**THUJA** *occidentalis pyramidalis.*

2½ ft. ....	2.50
-------------	------



Thuja (*Biota*) *occ. comacta* and *aurea nana globosa* being inspected by Sam, one of the Tankard brothers.

**CONIFEROUS EVERGREENS — continued**

**THUJA** orientalis (Biota) aurea nana globosa. Berckman's Golden Globe. Sold out.

**THUJA** or. compacta. (Biota) Compact bright green Arborvitae of splendid form and texture.

2½-3 ft. . . . . 2.50

**THUJA** or. (Biota) bonita. Beauties.

18-24 in. . . . . 2.25

2-2½ ft. . . . . 3.00

**Flowering Shrubs**

NICE, YOUNG, VIGOROUS HEAVY STOCK. 50 OR MORE OF ONE KIND AND GRADE AT THE 100 RATE

. . . . . **B & B SCHEDULE FOR SHRUBS** . . . . .

When time and available labor allow, we will B & B shrubs for following charges in addition to the each price per 10.

2-3 ft. . . . . .25  
 3-4 ft. . . . . .35  
 4-5 ft. . . . . .50

Each per 10                      Each per 100

**DEUTZIA** Pride of Rochester. Nice stock at special prices.

2-3 ft. . . . . .30 .20  
 3-4 ft. . . . . .40 .30  
 4-5 ft. . . . . .60 .50

**FORSYTHIA** spectabilis.

2-3 ft. . . . . .40 .30  
 3-4 ft. . . . . .50 .40  
 4-5 ft. heavy . . . . . .65 .55  
 5-6 ft. heavy . . . . . .90 .75

**HIBISCUS** syriacus. Althea, Rose of Sharon.

JEANNE d' ARC-double pure white.

Duchess de Brabant-double red. ARDENS-double violet.

ANEMONAEFLORUS-double pink.

**PRICES** above varieties.

2-3 ft. . . . . .35 .30  
 3-4 ft. . . . . .50 .40

**SPECIAL** White Altheas - Single pure white and single with red centre. Also double variegated.

2-3 ft. . . . . .25 17½  
 3-4 ft. . . . . .30 22½

**HYDRANGEA** paniculata grandiflora. ("P. G.")

1½-2 ft. . . . . .45  
 2-3 ft. . . . . .60

**KOLKWITZIA** amabilis. Beautybush.

2-3 ft. . . . . .55 .45  
 3-4 ft. heavy . . . . . .70 .60  
 4-5 ft. heavy . . . . . 1.00 .80

**LONICERA** fragrantissima.

2-3 ft. . . . . .50 .40

**LONICERA** tatarica zabelli. Zabel's Red Flowering Bush Honeysuckle.

2-3 ft. . . . . .50 .40  
 3-4 ft. . . . . .60 .50

**PHILADELPHUS** coronarius. Sweet Mockorange.

2-3 ft. . . . . .35 .30  
 3-4 ft. . . . . .40 .35  
 4-5 ft. . . . . .50 .45  
 5-6 ft. . . . . .75 .60

## FLOWERING SHRUBS — continued

	Each per 10	Each per 100
<b>PHILADELPHUS</b> grandiflorus.		
2-3 ft. ....	.40	.30
3-4 ft. ....	.50	.40
<b>SPIRAEA</b> arguta. Early, like thunbergi, expect large growing.		
3-4 ft. ....	.60	.50
4-5 ft. ....	.90	.75
<b>SPIRAEA</b> van houttei. Very fine stock.		
2-3 ft. heavy .....	.35	.30
3-4 ft. heavy .....	.50	.40
4-5 ft. heavy .....	.75	.60
5-6 ft. ....	1.00	.90
<b>SYRINGA</b> chinensis. (rothomagensis) Chinese Lilac.		
2-3 ft. ....	.55	.45
<b>SYRINGA</b> . French Hybrid Lilac.		
<b>MME. CASIMER PERIER</b> . Double White.		
1½-2 ft. heavy .....	.75	
<b>MICHEL BUCHNER</b> . Double, lilac flowers.		
2½-3 ft. extra heavy .....	1.00	
<b>WALDECK ROUSSEAU</b> . Double, violet.		
1½-2 ft. ....	.55	
2-3 ft. ....	.75	
<b>VITEX</b> macrophylla. An improved variety with lovely foliage and long dark spikes of flowers		
2-3 ft. ....	.50	.40
3-4 ft. heavy .....	.60	.50
4-5 ft. heavy .....	.90	.75
5-6 ft. heavy .....	1.00	.90
<b>WEIGELIA</b> Eva Rathke. Deep Red.		
2-3 ft. ....	.50	.45
3-4 ft. ....	.85	.70
<b>WEIGELIA</b> rosea. Pink Weigelia.		
2-3 ft. ....	.40	.30
3-4 ft. ....	.55	.45
4-5 ft. ....	.90	.75

## Flowering Trees

<b>CERCIS</b> canadensis. Red Bud or Judas Tree.		
3-4 ft. ....		.60
4-5 ft. ....		.80
5-6 ft. ....		1.00
6-8 ft. ....		1.50
8-10 ft. ....	3.50 to	7.50
(Add 50% to above rates for B&B)		
<b>CORNUS</b> florida. White Dogwood. Only a few trees left. Ask for quotations.		
<b>CORNUS</b> florida rubra. Pink Dogwood. Sold Out.		
<b>FRANKLINIA</b> altamaha (Gordonia). The rare Franklinia. Discovered in 1777 on the banks of the Altamaha River in Georgia and brought to Philadelphia, the native plants later becoming lost. This is a beautiful small tree bearing a succession of snowy white flowers with yellow stamens in the fall until frost.		
2-2½ ft. sturdy, well branched, single stem Trees		1.85
<b>MAGNOLIA</b> soulangeana. (Saucer Magnolia). Nice bushy plants.		
2-3 ft. B&B .....		3.00
3-4 ft. B&B .....		4.00

## TANKARD NURSERIES

### FLOWERING TREES — continued

**MALUS** - Flowering Crabapple. Flowering Crabapples are one of our specialties. We grow choice varieties and extra nice trees, all well branched, but have only a few trees left unsold. Ask for quotations.

**MALUS.** Fruiting Apple. Heavy, well branched trees, transplanted three years ago. Especially good for landscape and home planting.

**VARIETIES:** Yellow Transparent, Red Delicious, Lodi, Black Stayman, Double Red Delicious, Yellow Delicious, Golden Bough, and Horse, but trueness to label not guaranteed.

**SIZES:**

8-10 ft. 1½-2 in. cal. ....	3.00
\$250.00 per 100	
10-12 ft. 2-2½ in. cal. ....	4.00

**PRUNUS** serrulata Kwanzan. Pink upright double flowering cherry.

5-6 ft. ....	4.00
4-5 ft. ....	3.25

**PRUNUS** subhirtella pendula. Weeping Japanese Cherry. Number 1 heads, budded on standards, single and double varieties.

5-6 ft. B&B few ....	7.50
5-6 ft. b. r. Spring delivery only .....	5.00

### SHADE TREES

**MELIA** azedarack. (China Berry) Attractive rapid growing tree with purplish flowers and yellow "china" berries.

9-11 ft. - 2-2½ in. cal. ....	3.50
10-12 ft. 2½-3 in. cal. ....	4.50

Our stock of shade trees, consisting of Maples, Oaks, Elms, Ashes and Weeping Willows has nearly all been sold for the season. A few remain, which will be quoted on request.

### TESTIMONIALS

Sept. 26, 1951

"We received from our foreman a report to the effect that those Azaleas which you delivered to us a day or so ago are very fine looking plants, and I want to thank you for having seen to it that our order was filled in what the writer feels, appeared to have been a very careful way."

January 16, 1952

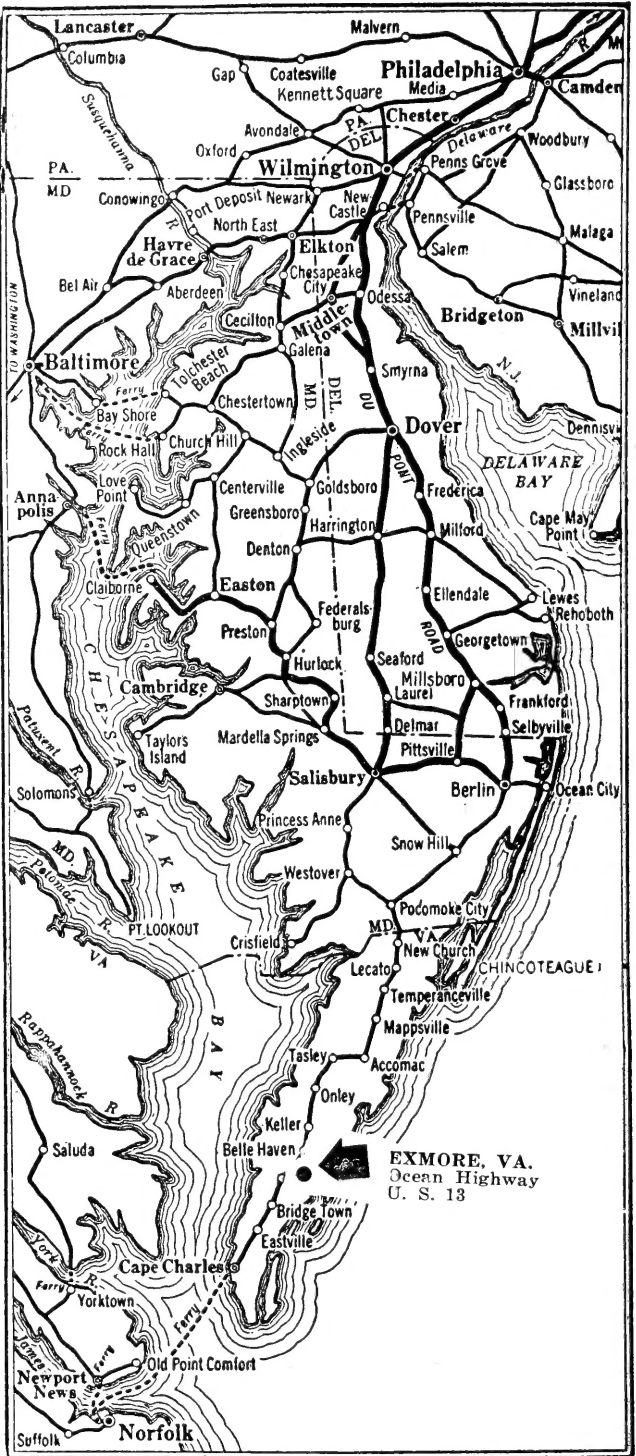
Bethesda, Md.

"It was nice looking material, so nice, in fact, we are listing another order for spring."

January 9, 1952

Narberth, Pa.

"The Burford hollies that we got from you were so nice that I am sure we shall be in the market for more in the spring."



Exmore, Va. is located on the Del-Mar-Va Peninsula. Readily reached by Highway U. S. 13, Pennsylvania Railway, Greyhound Bus, or Plane to Weirwood or Parksley; two hundred miles south of Philadelphia.

Connected with Norfolk by fast car and truck ferry, running every ninety minutes.